

For the living Easter Garden, you will need:

A tray or plate with edges

Stones different sizes

Small plant pot or plastic cup (for the tomb)

Clay or sand

Twigs (for the crosses)

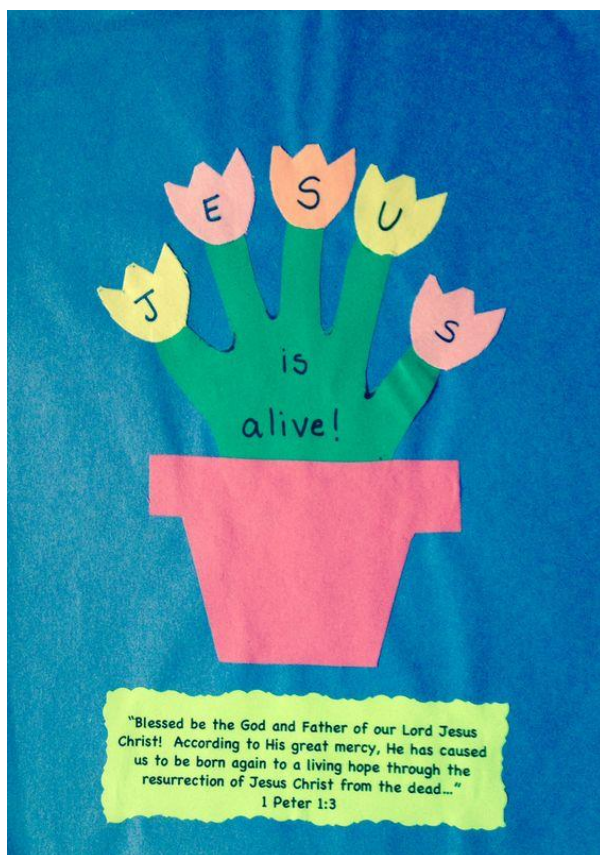
String or wool to tie the crosses

Leaves / flowers



All you need is:

- a paper plate
- brown paper
- crayons
- scissors
- glue



You will need: For Jesus is alive plant pot

Coloured/white card or paper

Marker pens/ crayons/ colouring pencils

Scissors

Glue (Pritt stick)